

CHAI WAN KOK STREET



GROUND FLOOR PLAN

GROUND FLOOR AREA TABLE (Square feet)																						
Floor	WORKSHOP A		WORKSHOP B		WORKSHOP C		WORKSHOP D		WORKSHOP E		WORKSHOP F		WORKSHOP G		WORKSHOP H		WORKSHOP J		WORKSHOP K		WORKSHOP L	
G/F	Gross Area	Scaleable Area	Gross Area	Scaleable Area	Gross Area	Scaleable Area	Gross Area	Scaleable Area	Gross Area	Scaleable Area	Gross Area	Scaleable Area	Gross Area	Scaleable Area	Gross Area	Scaleable Area	Gross Area	Scaleable Area	Gross Area	Scaleable Area	Gross Area	Scaleable Area
	2,368	1,705	3,001	2,161	1,329	957	1,546	1,113	1,514	1,090	1,426	1,027	11,266	8,110	9,646	7,138	11,690	8,652	10,302	7,624	4,586	3,394
Yard	--		--		--		--		--		--			1,184		959		887		223		710
																				S22		

Excluding 4/F, 13/F, 14/F and 24/F 不設 4・13・14及24樓  
The internal areas of units on upper floors are in general slightly larger than lower floors due to possible reduced thickness of structural walls on those floors. All given information is for reference only and the plan is subject to final Government approved plans and documentation.  
以上所有樓層的資料僅供參考，一切內容均以政府最後批准圖則及法律文件為準。



## 1ST FLOOR PLAN

Excluding 4/F, 13/F, 14/F and 24/F 不設 4、13、14 及 24 樓

The internal areas of units on upper floors are in general slightly larger than lower floors due to possible reduced thickness of structural walls on those floors. All given information is for reference only and the plan is subject to final Government approved plans and documentation.  
以上所提供的資料僅供參考，一切內容均以政府最後批准圖則及法律文件為準。



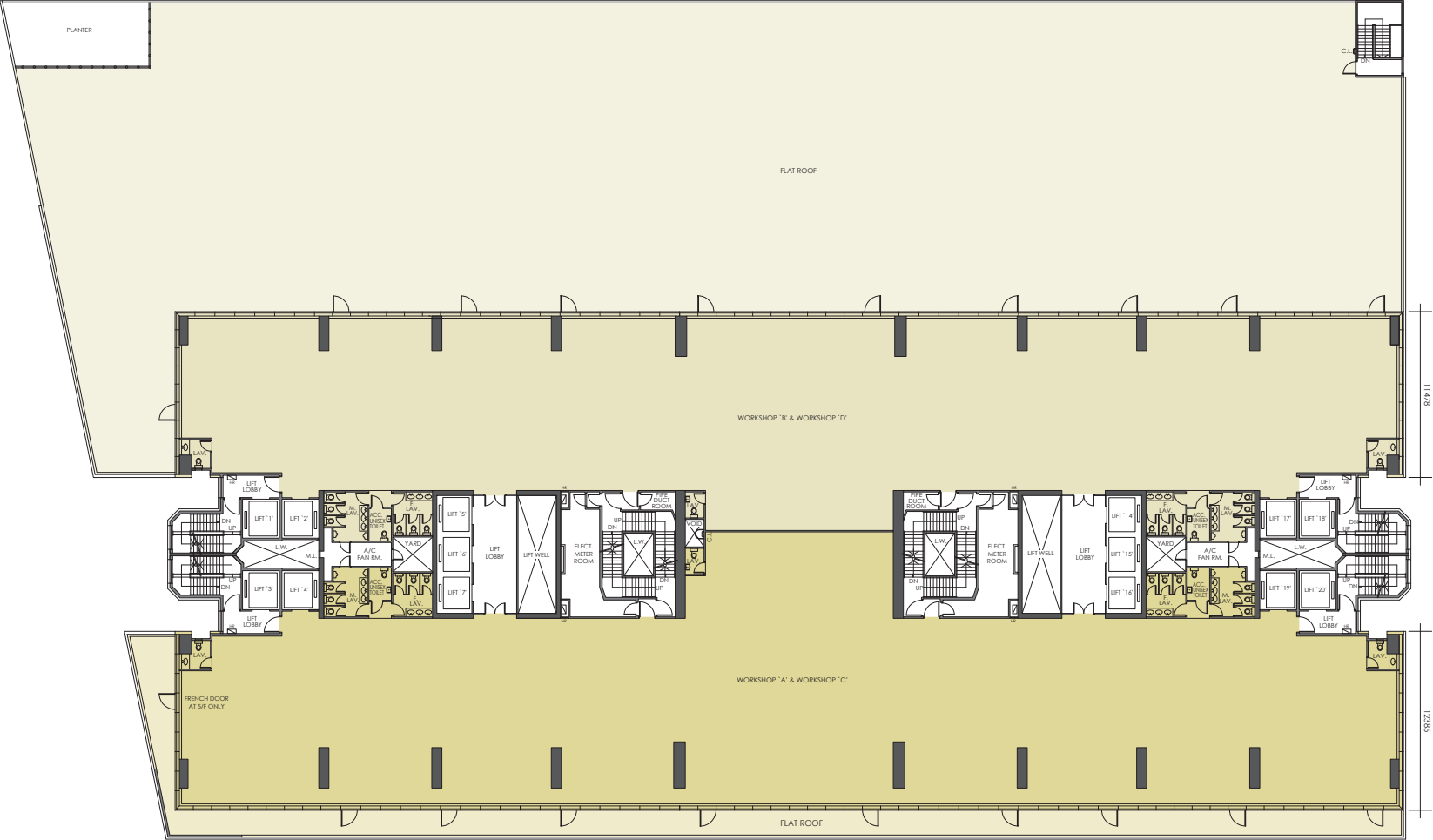


### 3RD FLOOR PLAN

Excluding 4/F, 13/F, 14/F and 24/F 不設 4 - 13 - 14 及 24 樓

The internal areas of units on upper floors are in general slightly larger than lower floors due to possible reduced thickness of structural walls on those floors. All given information is for reference only and the plan is subject to final Government approved plans and documentation.

以上所提供的資料僅供參考，一切內容均以政府最後批准圖則及法律文件為準。

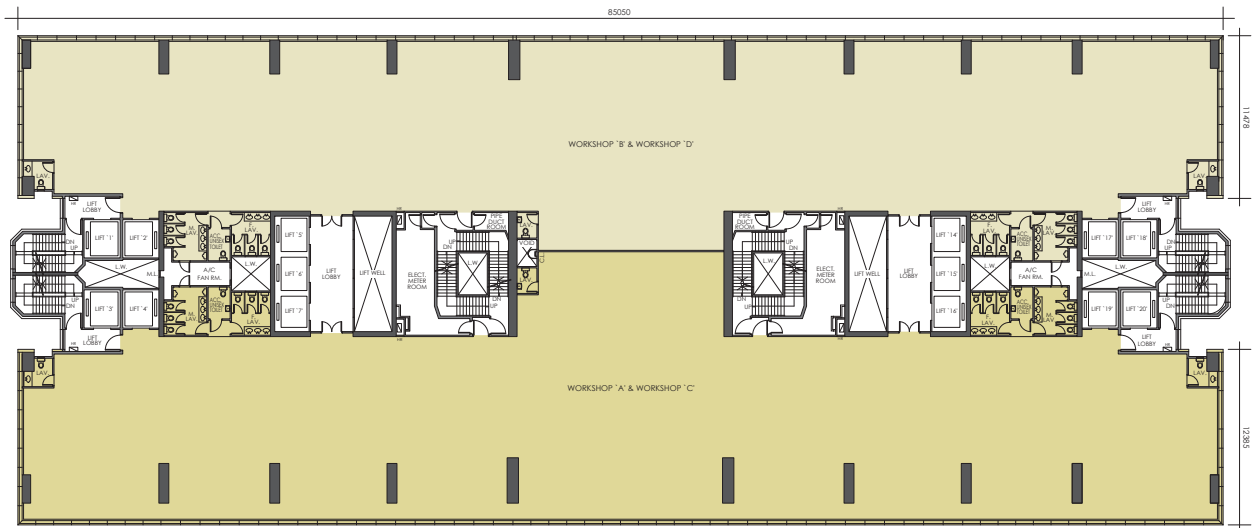


5TH FLOOR PLAN

5<sup>TH</sup> FLOOR AREA TABLE (Square feet)

Floor		WORKSHOP B & WORKSHOP D	
5/F	Gross Area		Selectable Area
	16,262		12,367
	FLAT ROOF		
	21,943		
	WORKSHOP A & WORKSHOP C		
	Gross Area		Selectable Area
	18,280		13,699
	FLAT ROOF		
	1,826		

Excluding 4/F, 13/F, 14/F and 24/F 不包括 4、13、14 及 24 樓  
The internal areas of units on upper floors are in general slightly larger than lower floors due to possible reduced thickness of structural walls on those floors. All given information is for reference only and the plan is subject to final Government approved plans and documentation.  
以上所提供的資料僅供參考，一切內容均以政府最後批准圖則及法律文件為準。



## 6TH FLOOR PLAN

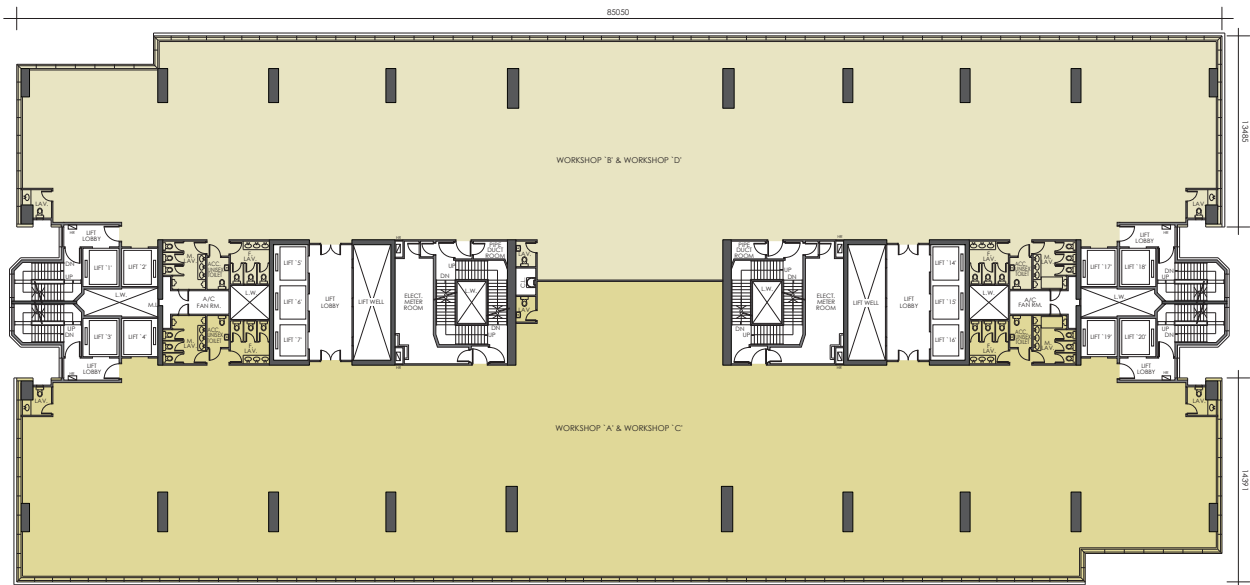
6<sup>TH</sup> FLOOR AREA TABLE (Square feet)

Floor		WORKSHOP B & WORKSHOP D	
6/F	Grass Area	16,262	12,367
	WORKSHOP A & WORKSHOP C		
	Grass Area	18,280	13,699

Excluding 4/F, 13/F, 14/F and 24/F 不設 4 - 13 - 14 及 24 樓

The internal areas of units on upper floors are in general slightly larger than lower floors due to possible reduced thickness of structural walls on those floors. All given information is for reference only and the plan is subject to final Government approved plans and documentation.

以上所提供的資料僅供參考，一切內容均以政府最後批准圖則及法律文件為準。



## 7TH, 8TH, 9TH FLOOR PLAN

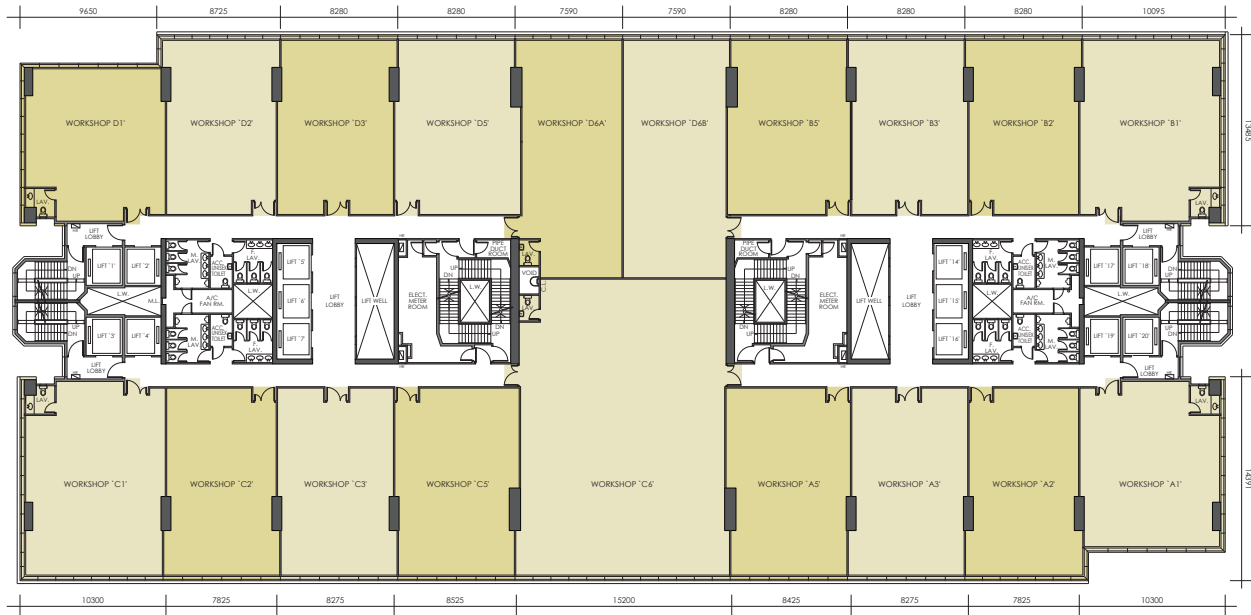
7<sup>TH</sup>, 8<sup>TH</sup>, 9<sup>TH</sup> FLOOR AREA TABLE (Square feet)

Floor	WORKSHOP B & WORKSHOP D	
	Gross Area	Saleable Area
7/F, 8/F, 9/F	18,341	13,996
	WORKSHOP A & WORKSHOP C	
	Gross Area	Saleable Area
	20,316	15,327

Excluding 4/F, 13/F, 14/F and 24/F. 不設 4 - 13 - 14 及 24 樓

The internal areas of units on upper floors are in general slightly larger than lower floors due to possible reduced thickness of structural walls on those floors. All given information is for reference only and the plan is subject to final Government approved plans and documentation.

以上所提供之資料僅供參考，一切內容均以政府最後批准圖則及法律文件為準。



10TH & 11TH FLOOR PLAN

10<sup>TH</sup> & 11<sup>TH</sup> FLOOR AREA TABLE (Square feet)

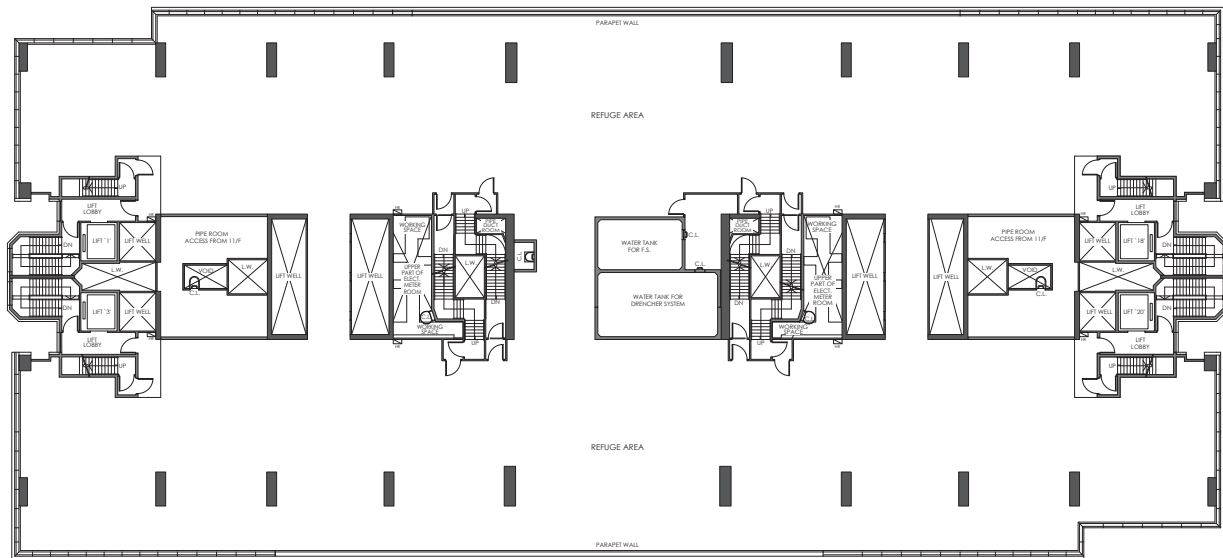
Floor	WORKSHOP D1		WORKSHOP D2		WORKSHOP D3		WORKSHOP D5		WORKSHOP D6A		WORKSHOP D6B		WORKSHOP B5		WORKSHOP B3		WORKSHOP B2		WORKSHOP B1	
	Gross Area	Schedulable Area	Gross Area	Schedulable Area	Gross Area	Schedulable Area	Gross Area	Schedulable Area	Gross Area	Schedulable Area	Gross Area	Schedulable Area	Gross Area	Schedulable Area	Gross Area	Schedulable Area	Gross Area	Schedulable Area	Gross Area	Schedulable Area
10/F & 11/F	1,842	1,242	1,630	1,099	1,690	1,139	1,790	1,207	2,048	1,381	2,112	1,424	1,757	1,184	1,690	1,139	1,614	1,088	2,168	1,461
	WORKSHOP C1		WORKSHOP C2		WORKSHOP C3		WORKSHOP C5		WORKSHOP C6		WORKSHOP A5		WORKSHOP A3		WORKSHOP A2		WORKSHOP A1			
	Gross Area	Schedulable Area	Gross Area	Schedulable Area	Gross Area	Schedulable Area	Gross Area	Schedulable Area	Gross Area	Schedulable Area	Gross Area	Schedulable Area	Gross Area	Schedulable Area	Gross Area	Schedulable Area	Gross Area	Schedulable Area	Gross Area	Schedulable Area
	2,312	1,558	1,736	1,170	1,810	1,220	1,889	1,273	5,132	3,459	1,889	1,273	1,810	1,220	1,753	1,182	1,985	1,338		

Excluding 4/F, 13/F, 14/F and 24/F. 不設 4 - 13 - 14 及 24 樓

The internal areas of units on upper floors are in general slightly larger than lower floors due to possible reduced thickness of structural walls on those floors. All given information is for reference only and the plan is subject to final Government approved plans and documentation.

以上所提供的面積僅供參考，一切內容均以政府最後批准圖則及法律文件為準。



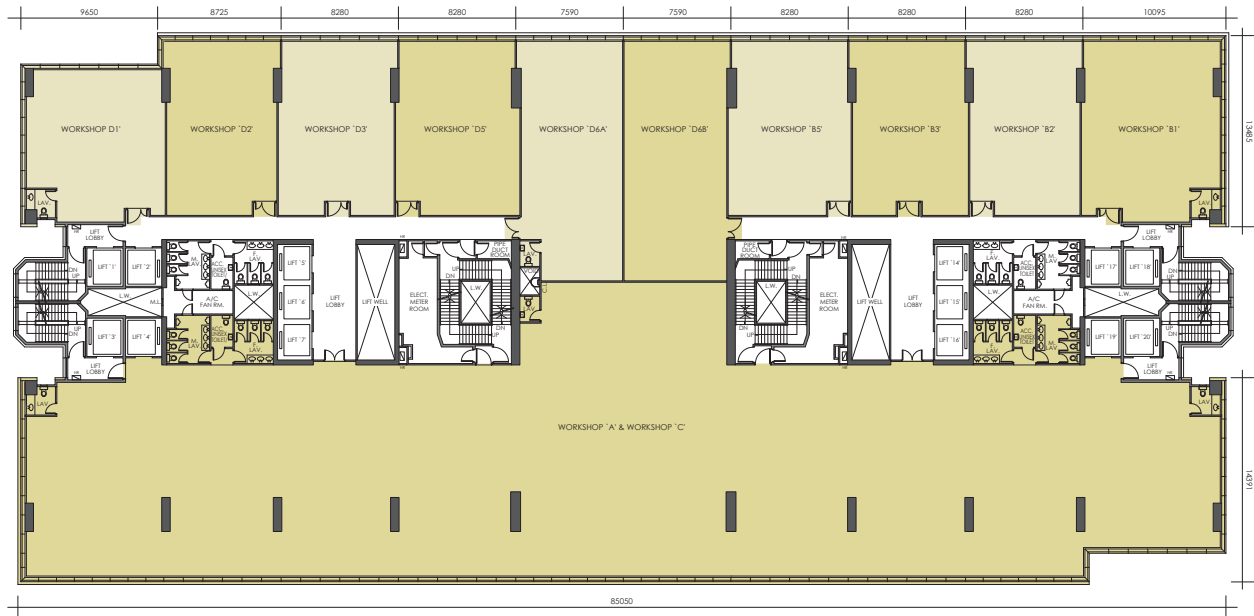


## 12TH FLOOR PLAN (REFUGE FLOOR)

Excluding 4/F, 13/F, 14/F and 24/F 不設 4・13・14 及 24 樓

The internal areas of units on upper floors are in general slightly larger than lower floors due to possible reduced thickness of structural walls on those floors. All given information is for reference only and the plan is subject to final Government approved plans and documentation.

以上所提供的資料僅供參考，一切內容均以政府最後批准圖則及法律文件為準。



## 15TH FLOOR PLAN

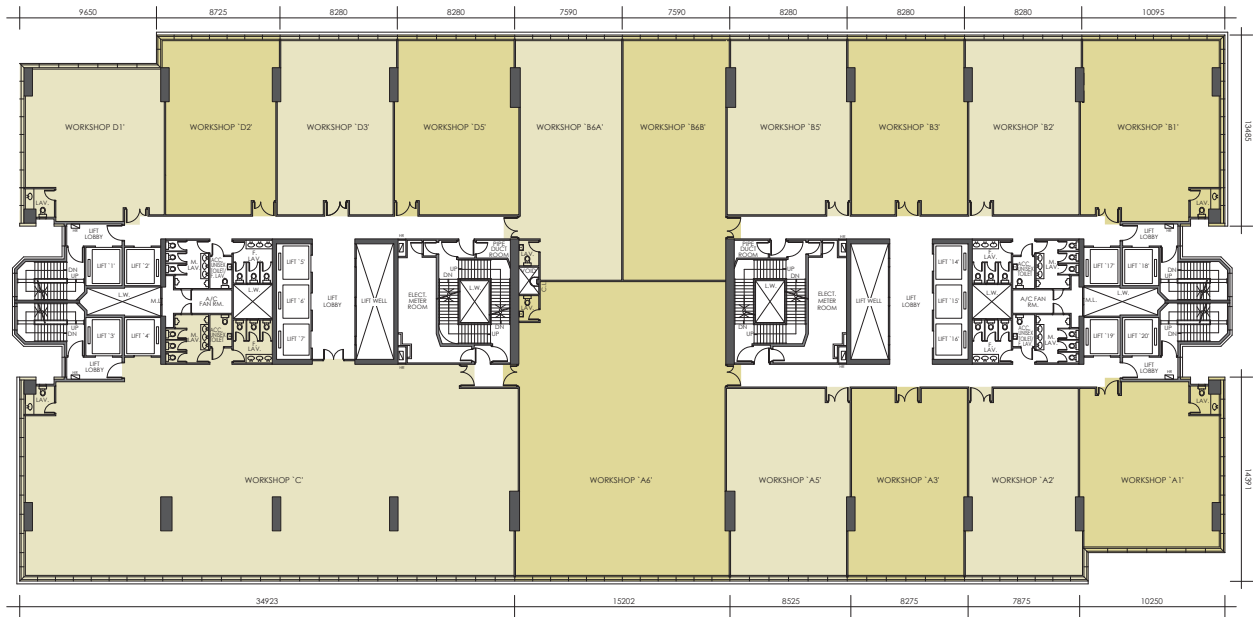
15<sup>TH</sup> FLOOR AREA TABLE (Square feet)

Floor	WORKSHOP D1		WORKSHOP D2		WORKSHOP D3		WORKSHOP D5		WORKSHOP D6A		WORKSHOP D6B		WORKSHOP B5		WORKSHOP B3		WORKSHOP B2		WORKSHOP B1	
	Gross Area	Saleable Area	Gross Area	Saleable Area	Gross Area	Saleable Area	Gross Area	Saleable Area	Gross Area	Saleable Area	Gross Area	Saleable Area	Gross Area	Saleable Area	Gross Area	Saleable Area	Gross Area	Saleable Area	Gross Area	Saleable Area
15/F	1,833	1,236	1,638	1,104	1,690	1,139	1,776	1,197	2,063	1,390	2,110	1,422	1,759	1,186	1,690	1,139	1,623	1,094	2,159	1,455
	WORKSHOP A & WORKSHOP C																			
	Gross Area										Saleable Area									
	20,316										15,321									

Excluding 4/F, 13/F, 14/F and 24/F. 不設 4 - 13 - 14 及 24 樓

The internal areas of units on upper floors are in general slightly larger than lower floors due to possible reduced thickness of structural walls on those floors. All given information is for reference only and the plan is subject to final Government approved plans and documentation.

以上所提供之資料僅供參考，一切內容均以政府最後批准圖則及法律文件為準。



16TH FLOOR PLAN

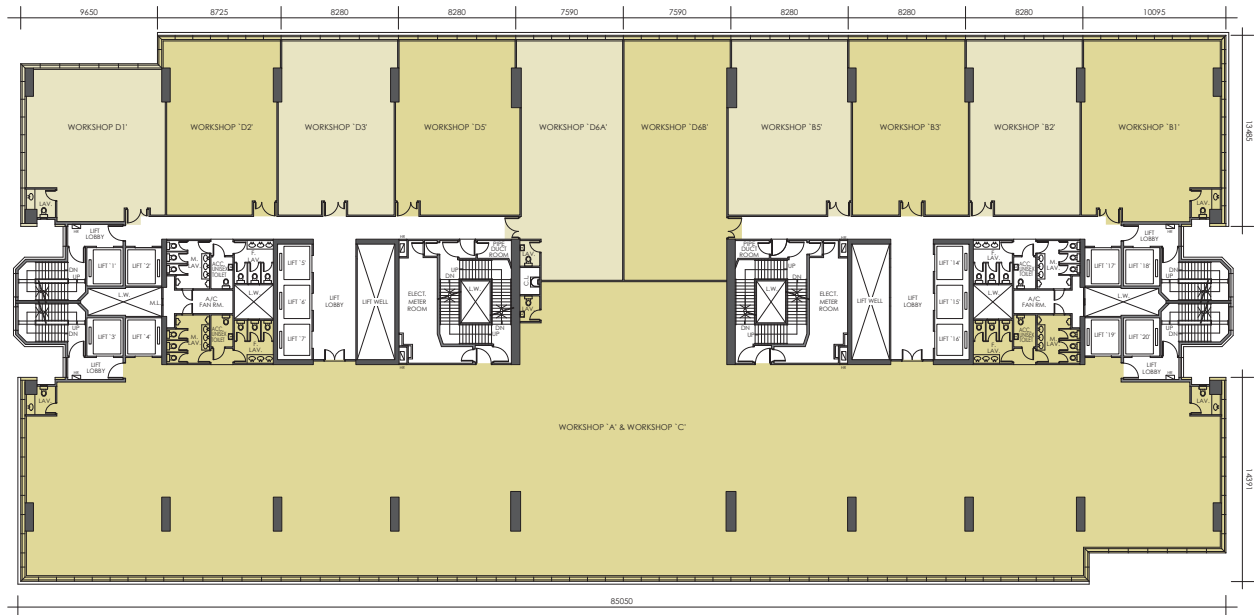
16<sup>TH</sup> FLOOR AREA TABLE (Square feet)

Floor	WORKSHOP D1		WORKSHOP D2		WORKSHOP D3		WORKSHOP D5		WORKSHOP B6A		WORKSHOP B6B		WORKSHOP B5		WORKSHOP B3		WORKSHOP B2		WORKSHOP B1												
16/F	Gross Area	Scaleable Area	Gross Area	Scaleable Area	Gross Area	Scaleable Area	Gross Area	Scaleable Area	Gross Area	Scaleable Area	Gross Area	Scaleable Area	Gross Area	Scaleable Area	Gross Area	Scaleable Area	Gross Area	Scaleable Area	Gross Area	Scaleable Area											
	1,833	1,236	1,638		1,104	1,690	1,139	1,776	1,197	2,063	1,390	2,110	1,422	1,759	1,186	1,690	1,139	1,623	1,094	2,159	1,455										
	WORKSHOP C								WORKSHOP A6				WORKSHOP A5		WORKSHOP A3		WORKSHOP A2		WORKSHOP A1												
	Gross Area				Scaleable Area				Gross Area				Scaleable Area				Gross Area		Scaleable Area												
	7,742				5,994				5,140				3,465				1,885		1,270		1,809		1,219		1,757		1,184		1,983		1,336

Excluding 4/F, 13/F, 14/F and 24/F. 不包括 4 - 13 - 14 及 24 樓

The internal areas of units on upper floors are in general slightly larger than lower floors due to possible reduced thickness of structural walls on those floors. All given information is for reference only and the plan is subject to final Government approved plans and documentation.

以上所提供的資料僅供參考，一切內容均以政府最後批准圖則及法律文件為準。



## 17TH FLOOR PLAN

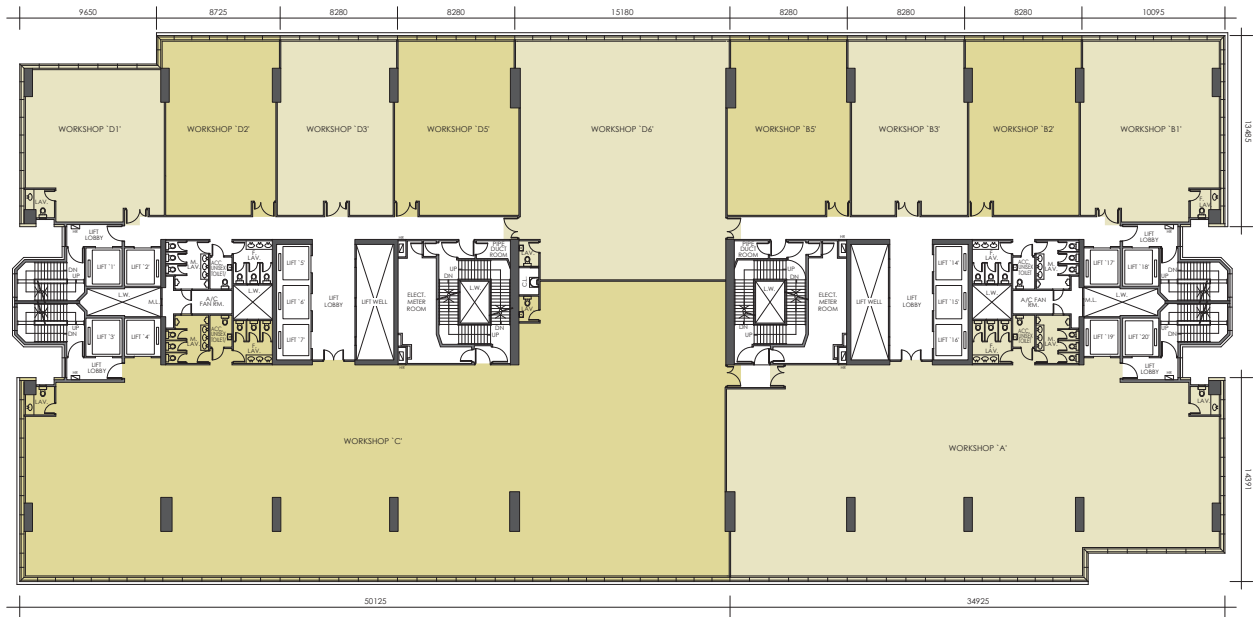
17<sup>TH</sup> FLOOR AREA TABLE (Square feet)

Floor	WORKSHOP D1		WORKSHOP D2		WORKSHOP D3		WORKSHOP D5		WORKSHOP D6A		WORKSHOP D6B		WORKSHOP B5		WORKSHOP B3		WORKSHOP B2		WORKSHOP B1	
	Gross Area	Scaleable Area	Gross Area	Scaleable Area	Gross Area	Scaleable Area	Gross Area	Scaleable Area	Gross Area	Scaleable Area	Gross Area	Scaleable Area	Gross Area	Scaleable Area	Gross Area	Scaleable Area	Gross Area	Scaleable Area	Gross Area	Scaleable Area
17/F	1,833	1,236	1,638	1,104	1,690	1,139	1,776	1,197	2,063	1,390	2,110	1,422	1,759	1,186	1,690	1,139	1,623	1,094	2,159	1,455
WORKSHOP A & WORKSHOP C																				
Gross Area										Scaleable Area										
20,316										15,321										

Excluding 4/F, 13/F, 14/F and 24/F. 不包括 4 - 13 - 14 及 24 樓

The internal areas of units on upper floors are in general slightly larger than lower floors due to possible reduced thickness of structural walls on those floors. All given information is for reference only and the plan is subject to final Government approved plans and documentation.

以上所提供的面積僅供參考，一切內容均以政府最後批准圖則及法律文件為準。



18TH FLOOR PLAN

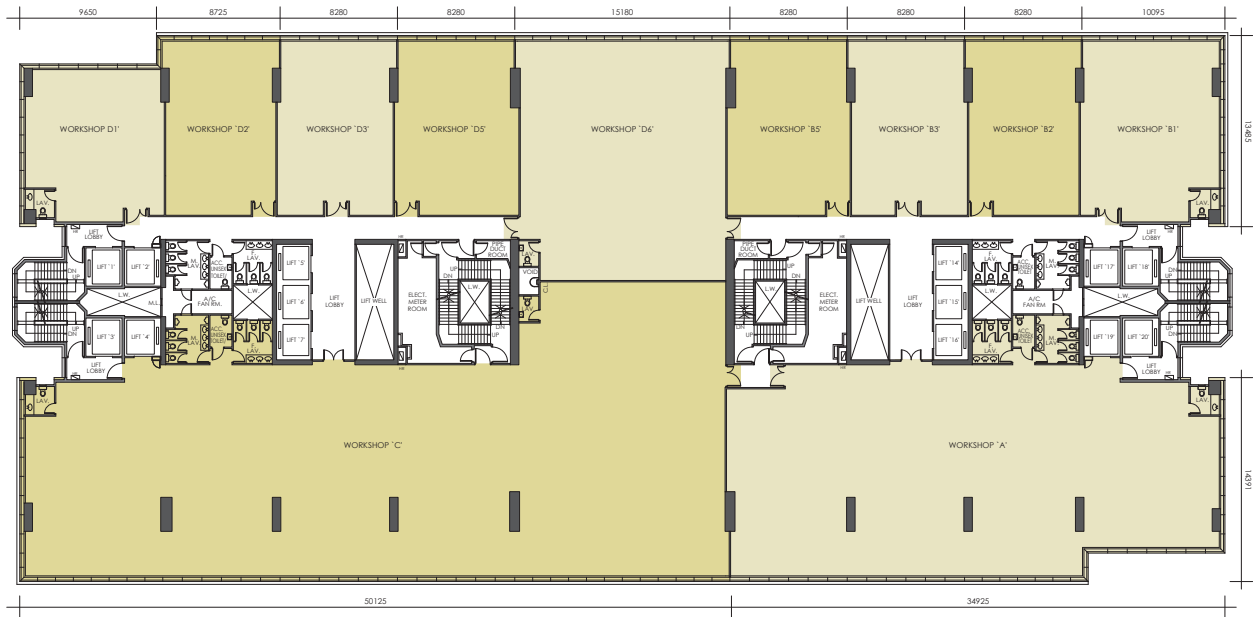
18<sup>TH</sup> FLOOR AREA TABLE (Square feet)

Floor	WORKSHOP D1		WORKSHOP D2		WORKSHOP D3		WORKSHOP D5		WORKSHOP D6		WORKSHOP B5		WORKSHOP B3		WORKSHOP B2		WORKSHOP B1	
	Gross Area	Scaleable Area	Gross Area	Scaleable Area	Gross Area	Scaleable Area	Gross Area	Scaleable Area	Gross Area	Scaleable Area	Gross Area	Scaleable Area	Gross Area	Scaleable Area	Gross Area	Scaleable Area	Gross Area	Scaleable Area
18/F	1,833	1,236	1,638	1,104	1,690	1,139	1,776	1,197	4,173	2,813	1,760	1,186	1,690	1,139	1,423	1,094	2,158	1,455
	WORKSHOP C								WORKSHOP A									
	Gross Area						Scaleable Area				Gross Area				Scaleable Area			
	12,883						9,497				7,433				5,786			

Excluding 4/F, 13/F, 14/F and 24/F 不設 4 - 13 - 14 及 24 樓

The internal areas of units on upper floors are in general slightly larger than lower floors due to possible reduced thickness of structural walls on those floors. All given information is for reference only and the plan is subject to final Government approved plans and documentation.

以上所提供的資料僅供參考，一切內容均以政府最後批准圖則及法律文件為準。



19TH FLOOR PLAN

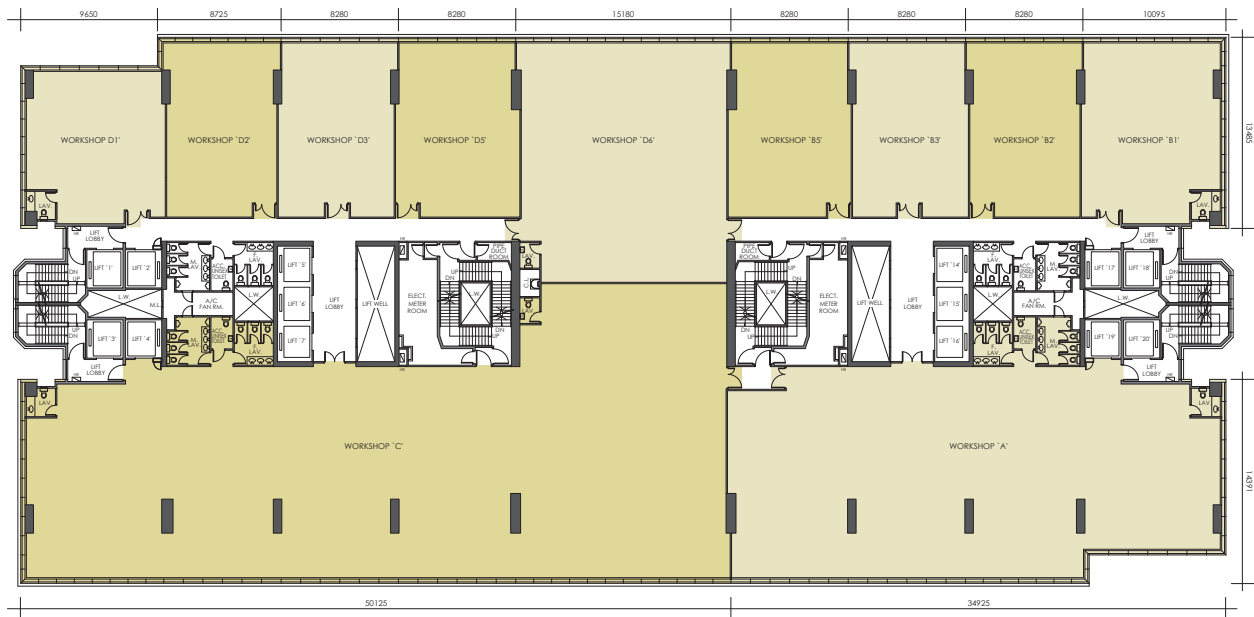
19<sup>TH</sup> FLOOR AREA TABLE (Square feet)

Floor	WORKSHOP D1		WORKSHOP D2		WORKSHOP D3		WORKSHOP D5		WORKSHOP D6		WORKSHOP B5		WORKSHOP B3		WORKSHOP B2		WORKSHOP B1	
	Gross Area	Scaleable Area	Gross Area	Scaleable Area	Gross Area	Scaleable Area	Gross Area	Scaleable Area	Gross Area	Scaleable Area	Gross Area	Scaleable Area	Gross Area	Scaleable Area	Gross Area	Scaleable Area	Gross Area	Scaleable Area
19/F	1,833	1,236	1,638	1,104	1,690	1,139	1,776	1,197	4,173	2,813	1,759	1,186	1,690	1,139	1,423	1,094	2,159	1,455
	WORKSHOP C								WORKSHOP A									
	Gross Area						Scaleable Area				Gross Area				Scaleable Area			
	12,883						9,497				7,433				5,786			

Excluding 4/F, 13/F, 14/F and 24/F. 不包括 4 - 13 - 14 及 24 樓

The internal areas of units on upper floors are in general slightly larger than lower floors due to possible reduced thickness of structural walls on those floors. All given information is for reference only and the plan is subject to final Government approved plans and documentation.

以上所提供的面積僅供參考，一切內容均以政府最後批准圖則及法律文件為準。



20TH FLOOR PLAN

20<sup>TH</sup> FLOOR AREA TABLE (Square feet)

Floor	WORKSHOP D1		WORKSHOP D2		WORKSHOP D3		WORKSHOP D5		WORKSHOP D6		WORKSHOP B5		WORKSHOP B3		WORKSHOP B2		WORKSHOP B1	
	Gross Area	Schedulable Area	Gross Area	Schedulable Area	Gross Area	Schedulable Area	Gross Area	Schedulable Area	Gross Area	Schedulable Area	Gross Area	Schedulable Area	Gross Area	Schedulable Area	Gross Area	Schedulable Area	Gross Area	Schedulable Area
20/F	1,833	1,236	1,638	1,104	1,690	1,139	1,776	1,197	4,173	2,812	1,759	1,186	1,690	1,139	1,623	1,094	2,159	1,455
	WORKSHOP C								WORKSHOP A									
	Gross Area						Schedulable Area				Gross Area				Schedulable Area			
	12,883						9,497				7,433				5,786			

Excluding 4/F, 13/F, 14/F and 24/F. 不包括 4 - 13 - 14 及 24 樓

The internal areas of units on upper floors are in general slightly larger than lower floors due to possible reduced thickness of structural walls on those floors. All given information is for reference only and the plan is subject to final Government approved plans and documentation.

以上所提供的面積僅供參考，一切內容均以政府最後批准圖則及法律文件為準。